



**COMOTI**  
ROMANIAN RESEARCH &  
DEVELOPMENT INSTITUTE FOR  
**GAS TURBINES**

**ANIMA**

Aviation Noise Impact Management  
through Novel Approaches



# Defining non-acoustical factors. Multidisciplinary focus

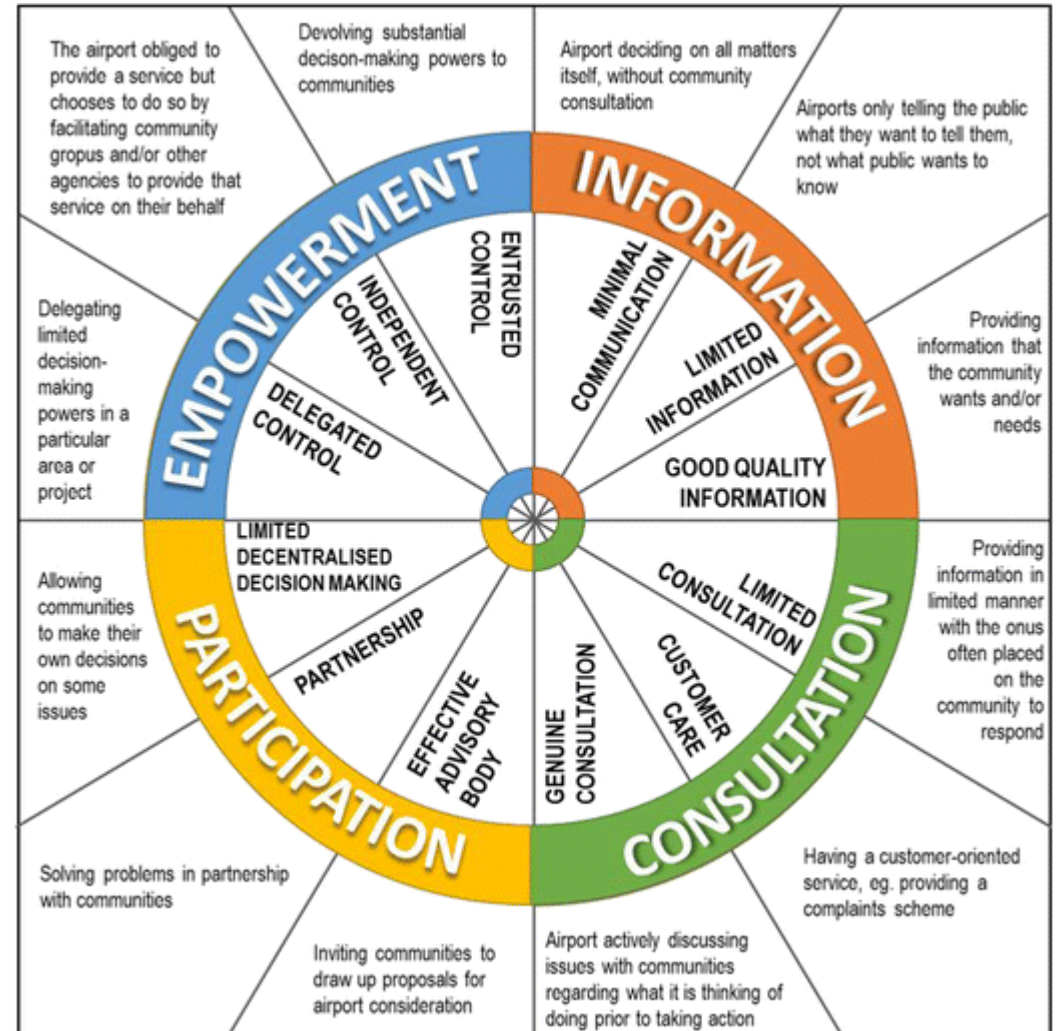
**Author(s): Elena Narcisa Burtea, Dan Radulescu**

**Affiliation: Romanian Research and Development Institute for Gas  
Turbines**

CEAS-ASC 2018 Workshop

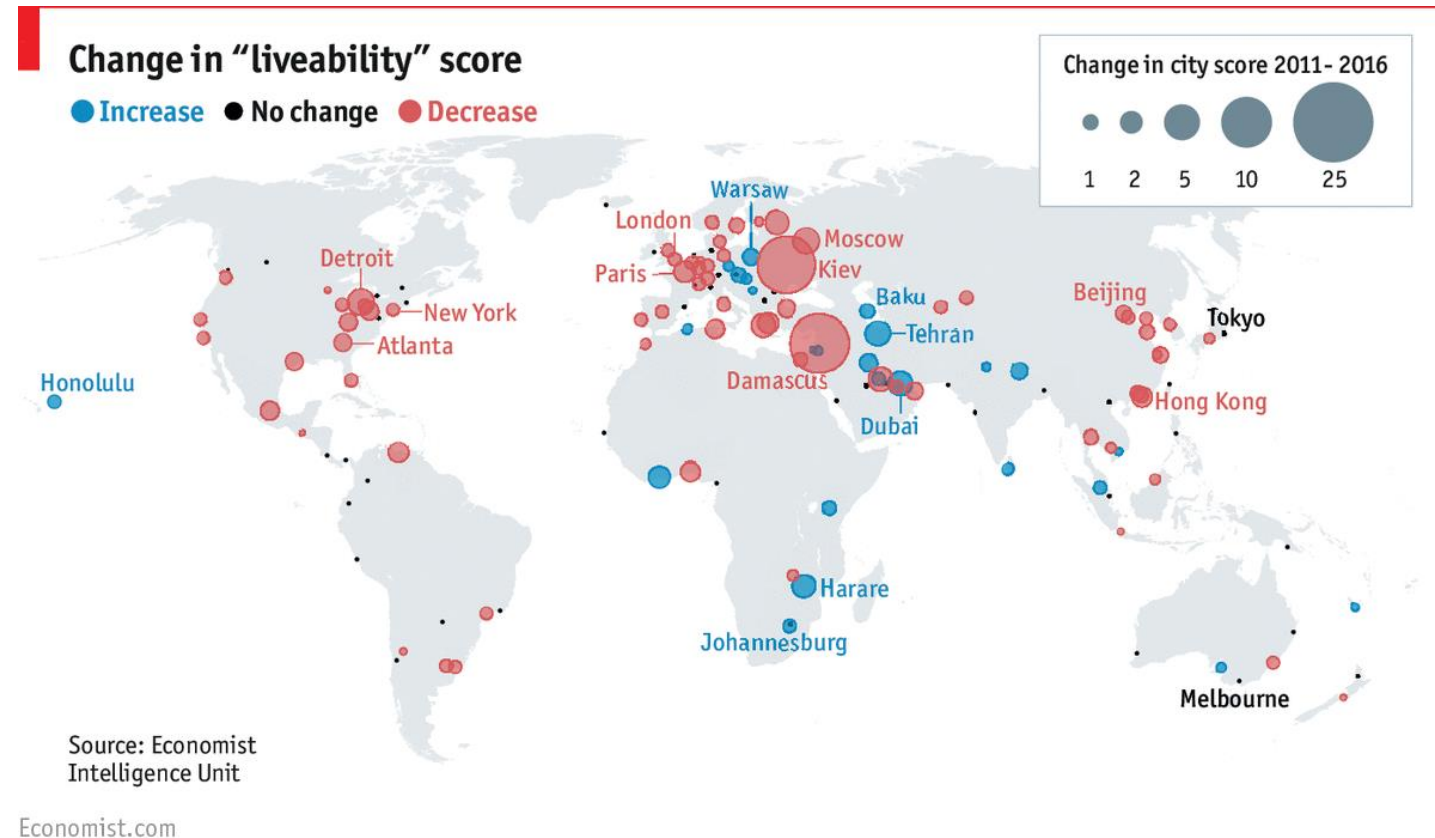
# Overview of Non-acoustical Factors

- Summary of research
- Multidisciplinary characteristics
- Challenges in defining new factors
- Potential liaisons with other studies



# “Livable cities” (example)

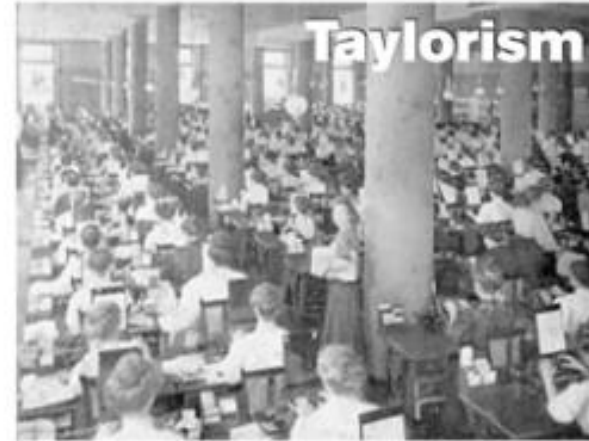
- Why is multidisciplinary needed?
- Definition of livability
- Development of future cities
- Organical growth (tendencies)
- Sustainability (solutions)



Source: <https://www.economist.com/graphic-detail/2016/08/18/the-worlds-most-liveable-cities>

# “Soundscaping” insight (example)

- Historical overview
- Four ways in which sound affects people
- When sound becomes “accidental and unpleasant”?
- Recognition, Association, Power
- “The four Golden Rules for commercial sound”



**1906**

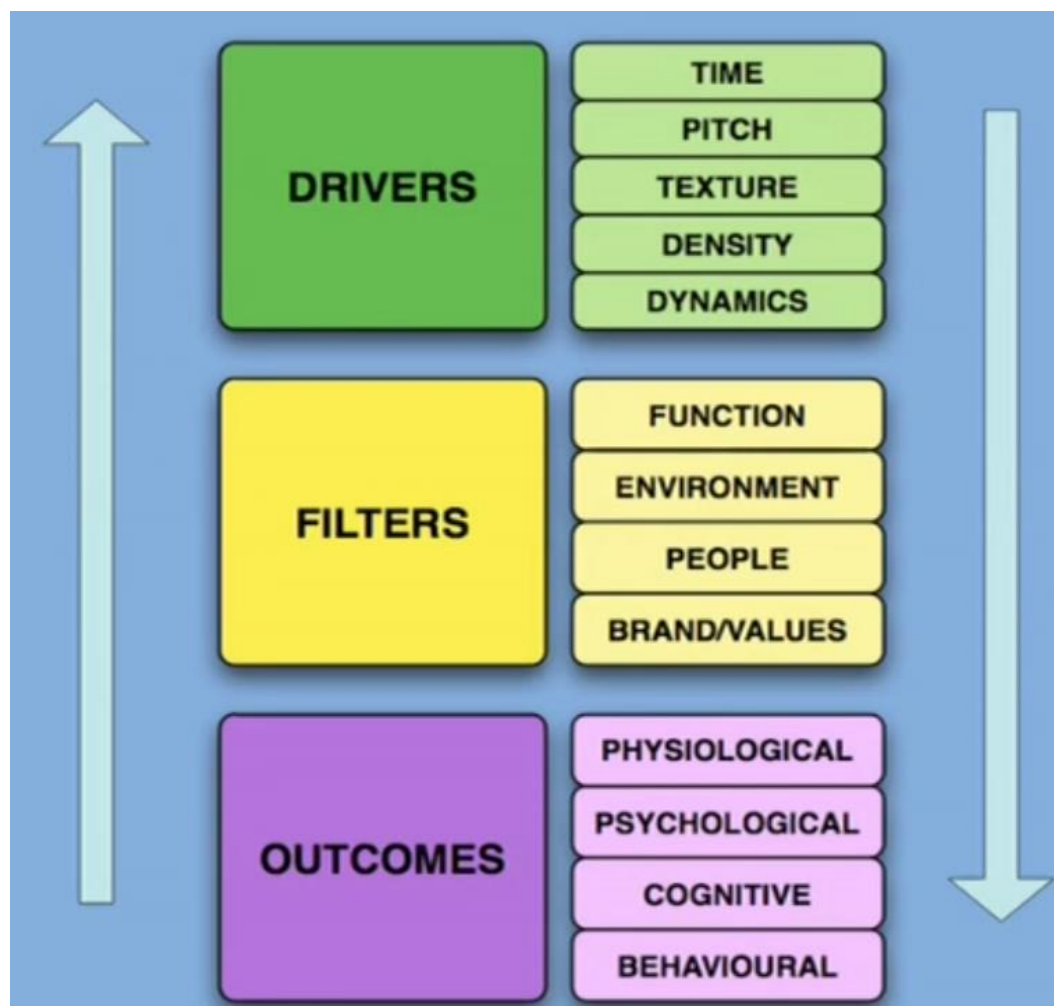
Source: <https://www.youtube.com/watch?v=Zap49WLCS-E>

Image: Early Office Museum  
www.earlyofficemuseum.com



**2014**

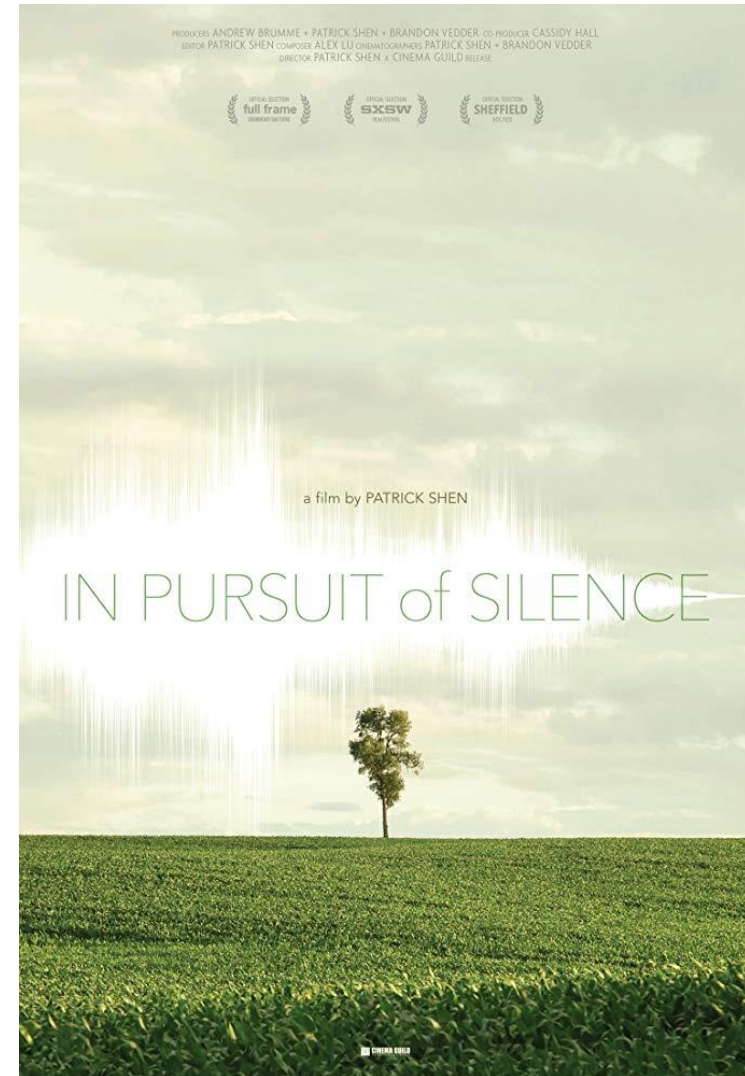
# “Soundscaping” Model (example)



Source: <https://www.youtube.com/watch?v=rRephXq33s>

# “Soundscaping” – Sound Health (example)

- Sound Health (Schizophonia, the cost of compression, NIHD)
- Hearing versus listening (reductive/expansive)
- What is silence?



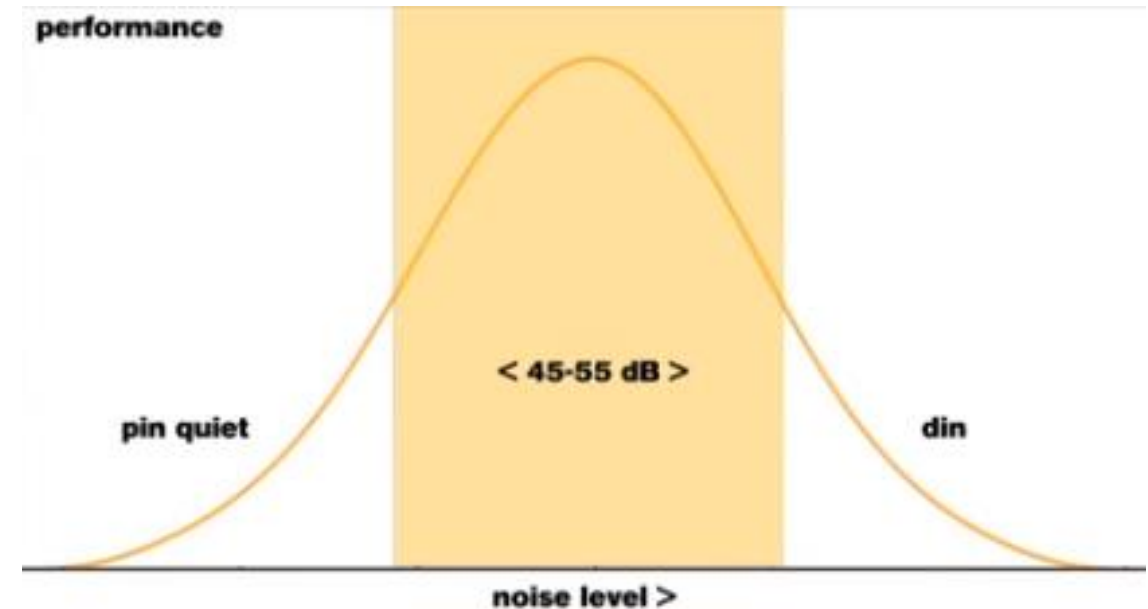
# “Soundscaping” – Sound Health (example)

listen	create	connect	care
			
<b>consciously</b>	<b>speaking</b> <b>singing</b> <b>playing</b>	<b>choirs, groups</b> <b>chanting</b> <b>drum circles</b>	<b>protect</b> <b>design</b> <b>speaking up</b> 

Source: <https://www.youtube.com/watch?v=ELgvDMTKyBE>

# Lesson Learning Approach

- Consider a shift from annoyance to impact on 'happiness'
- Focus on performance targets
- Understand general complaints on noise
- Understand long-term effects on productivity
- Understand the implications of 'designing experience' and find opportunities
- Design 'creativity areas' to support a collaborative approach between airports and communities
- Understand livability characteristics





Thank you for your attention!